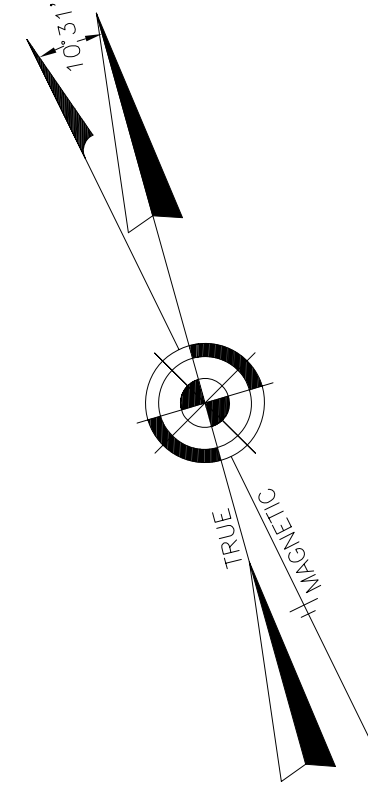
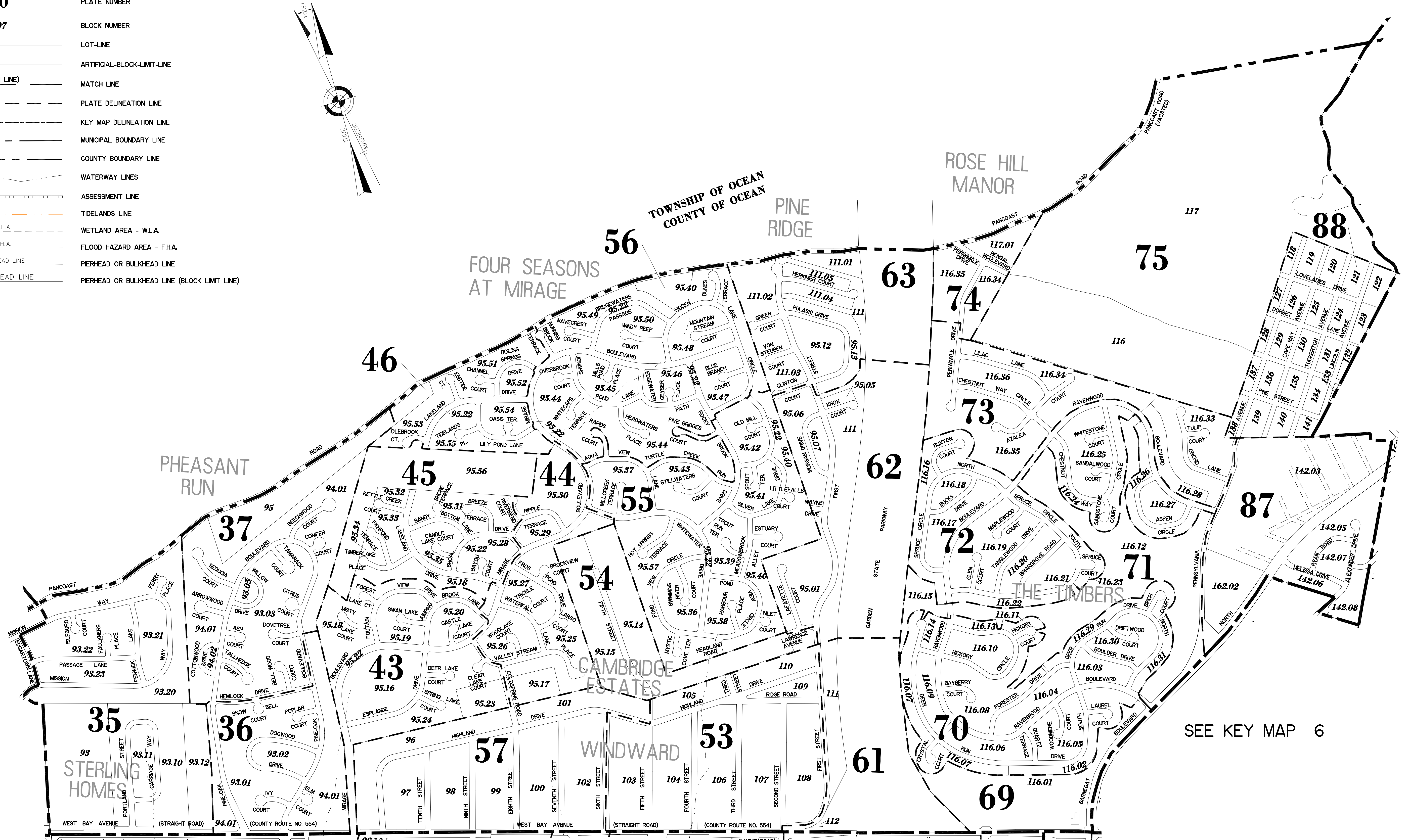


## KEY MAP

<b>10</b>	PLATE NUMBER
<b>107</b>	BLOCK NUMBER
---	LOT-LINE
---	ARTIFICIAL-BLOCK-LIMIT-LINE
---	MATCH LINE
---	PLATE DELINEATION LINE
---	KEY MAP DELINEATION LINE
---	MUNICIPAL BOUNDARY LINE
---	COUNTY BOUNDARY LINE
---	WATERWAY LINES
---	ASSESSMENT LINE
---	TIDELANDS LINE
---	WETLAND AREA - W.L.A.
---	FLOOD HAZARD AREA - F.H.A.
---	PIERHEAD OR BULKHEAD LINE
---	PIERHEAD OR BULKHEAD LINE (BLOCK LIMIT LINE)



SEE KEY MAP 2



SEE KEY MAP 6

SEE KEY MAP 6

SEE KEY MAP 3

## KEY MAP 4 TOWNSHIP OF BARNEGAT

OCEAN COUNTY NEW JERSEY  
SCALE: 1" = 500' DATE: 11-14-2003

CRAIG F. REMINGTON LAND SURVEYOR LIC. NO. 23924



**REMINGTON, VERNICK & VENA ENGINEERS**  
9 ALLEN STREET, TOMS RIVER, N.J. 08753  
(732) 286-9220, FAX (732) 505-8416  
WEB SITE ADDRESS: WWW.RVVE.COM

"THIS TAX MAP PLATE HAS BEEN DIGITALLY DRAWN USING COMPUTER-AIDED DRAFTING/DESIGN (CADD) AND COORDINATE GEOMETRY (COGO). IT IS BASED ON THE ORIGINAL DIGITALLY DRAWN TAX MAP PLATE BEARING THE OFFICIAL NEW JERSEY DIVISION OF TAXATION APPROVAL STAMP WITH APPROVAL DATE (7-31-2006) SERIAL NUMBER (896) AND SIGNATURES OF SIGNERS' JAMES J. COLL, CHIEF, LOCAL ASSESSMENT, SANTO C. DIDONATO, SUPERVISING FIELD REPRESENTATIVE. THIS TAX MAP PLATE HAS BEEN DIGITALLY UPDATED TO REFLECT CONDITIONS AS OF 5-1-2010. THE ORIGINAL DIGITALLY DRAWN TAX MAP PLATE WITH THE OFFICIAL APPROVAL STAMP IS ON FILE WITH THE TOWNSHIP OF BARNEGAT ENGINEER."